



Tel	/	561.277.9751
Email	/	info@3bprotection.com
Web	/	www.3bprotection.com
Inquiries	/	estimating@3bprotection.com
Addr	/	364 Cypress Drive, Suite 102, Tequesta, FL 33469

## 3B ANTI-THEFT MATTING SYSTEM

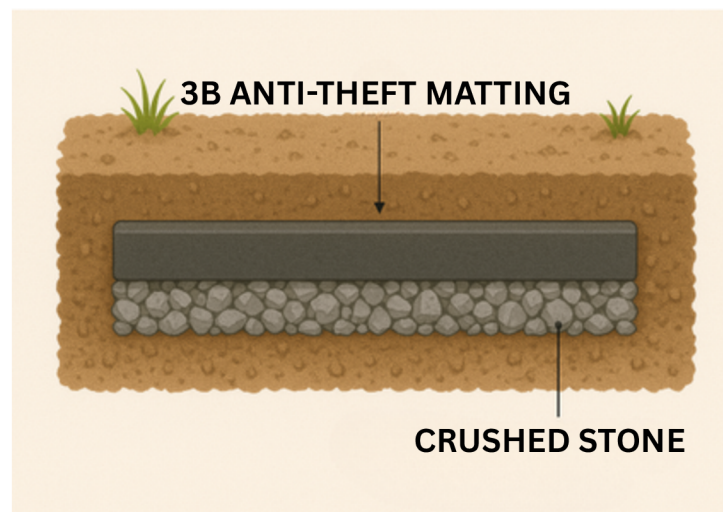
The 3B Anti-Theft Matting System is a state-of-the-art subsurface security solution engineered to deliver unparalleled protection for critical infrastructure. As threats to underground assets such as copper wiring, conduit, and fiber optics continue to rise—driven by theft, vandalism, and sabotage—3B provides a proven, real-world solution built for resilience and simplicity.

What sets the 3B matting system apart is its ability to form an invisible, impenetrable barrier beneath the surface. Constructed from proprietary composite materials developed through extensive research and testing, it is designed to resist cutting, prying, torching, and even blast pressure. The system serves as a passive deterrent that not only delays intrusion but often prevents it entirely.

Unlike traditional concrete encasement or steel shielding methods, the 3B system installs with minimal disruption and requires no heavy infrastructure. Panels are placed around the perimeter of critical infrastructure—such as substations, data centers, and utility yards—serving as a robust physical barrier to deter digging or burrowing. The system can be installed within hours using hand tools or light equipment and is highly effective in protecting against unauthorized excavation.

An added benefit is its ability to serve as a critter guard, preventing rodents and other wildlife from accessing sensitive cable ducts, grounding grids, or equipment pads. For large or remote sites, material can also be delivered via ready-mix truck and installed using a pump—further reducing labor and time.

The system is modular, scalable, and can be adapted to new builds or retrofits. Whether installed under a transformer, around utility trenches, or along the perimeter of a data facility, 3B matting provides fast, effective, and sustainable protection that helps secure vital operations against modern threats. Its ease of deployment and high-performance materials make it the preferred solution for utility providers, military operations, data centers, and high-value commercial infrastructure across North America.





## KEY FEATURES:

- **Sub-Surface Installation:** Installed below ground to protect cables, conduit, and copper grounding.
- **Reinforced Composite Construction:** Resists cutting, burning, prying, and high-pressure force.
- **Modular & Scalable Design:** Fits various asset types; available in multiple sizes and thicknesses.
- **Fast, Non-Invasive Deployment:** Installs quickly with minimal disruption; ideal for new or retrofit projects.
- **Integration Capability:** Compatible with other 3B systems like ballistic walls and anti-climb tech.
- **Eco-Friendly Manufacturing:** Made from recycled materials to support LEED and sustainability goals.
- **Built with 3B Blast Material Matrix (3B-MAT-BLAST only):** Special layered composite resists explosive forces for critical sites.

## APPLICATIONS:

- Electrical substations
- Data centers
- Military installations
- Telecommunications hubs
- Oil and gas infrastructure
- Secure commercial and financial facilities

## BENEFITS:

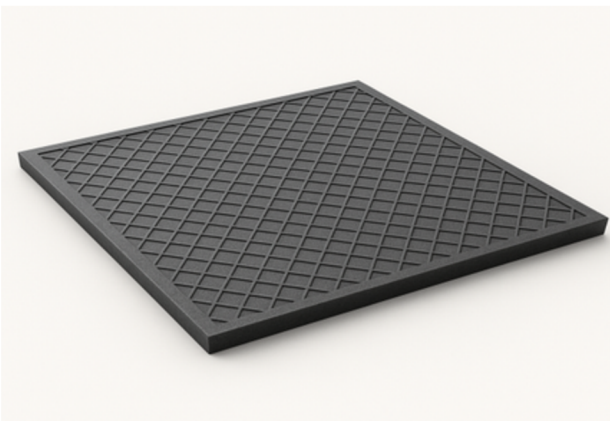
- Prevents copper theft and infrastructure sabotage
- Supports compliance with CIP-014 and other regulatory standards
- Maintains the aesthetics of the site with a concealed defense
- Minimizes service disruptions due to theft or vandalism
- Enhances total site security when used with other 3B systems

## PRODUCT CODES & USE CASES:

- **3B-MAT-BASE:** Standard mat for general applications
- **3B-MAT-HD:** Heavy-duty mat for high-risk environments
- **3B-MAT-RFIT:** Custom-fit solution for retrofit and overlay installs
- **3B-MAT-BLAST:** Enhanced blast-resistant subsurface barrier
- **3B-MAT-ELITE:** Embedded sensors for smart monitoring

## OPTIONAL ADD-ONS:

- Tamper sensors
- Warning indicators
- Integrated grounding systems





## TECHNICAL SPECIFICATIONS:

Specification	3B-MAT-BASE	3B-MAT-HD	3B-MAT-RFIT	3B-MAT-BLAST	3B-MAT-ELITE
<b>Dimensions (L x W)</b>	2 ft x 2 ft to 4 ft x 8 ft	2 ft x 2 ft to 4 ft x 8 ft	Custom fit	2 ft x 2 ft to 4 ft x 8 ft	2 ft x 2 ft to 4 ft x 8 ft
<b>Thickness</b>	1.5–8.0 in	1.5–8.0 in	1.5–8.0 in	1.5–8.0 in	1.5–8.0 in
<b>Weight per Panel</b>	Varies	Varies	Varies	Varies	Varies
<b>Material Composition</b>	3B composite	3B composite	3B composite	3B + blast matrix	3B + sensors
<b>Impact Resistance</b>	400–10,000 psi	400–10,000 psi	400–10,000 psi	400–10,000 psi	400–10,000 psi
<b>Cutting Resistance</b>	Extreme	Maximum	High	Maximum	Maximum
<b>Heat Resistance</b>	Up to 900°F	Up to 1,200°F	Up to 800°F	Up to 1,500°F	Up to 1,300°F
<b>Certifications</b>	UL 752 Level 5–10, RLS	UL 752 Level 5–10, RLS	UL 752 Level 5–10, RLS	ASTM F2927, UL 752 Level 5–10, RLS	UL 752 Level 5–10, RLS
<b>Installation Type</b>	New/Retrofit	New Install	Retrofit/Overlay	New Install	New/Retrofit
<b>Life Expectancy</b>	25+ years	30+ years	20+ years	35+ years	30+ years

**\*Note: Thickness and configuration vary based on above-ground loading and site-specific threat level.**



## ENVIRONMENTAL PERFORMANCE - FLOODING CONSIDERATIONS:

- **Water Stability:** 3B composite material is non-absorbent and does not degrade in saturated conditions.
- **Anchoring in Flood Zones:** In areas subject to heavy flooding, use of rebar pins, helical earth anchors, or mechanical fixings into concrete is recommended to prevent uplift or floatation.
- **Subgrade Options:** For flood-prone sites, installation over lean mix concrete or well-drained gravel base is advised to avoid undermining.
- **Inspection After Flooding:** Panels should be inspected for movement or exposure. 3B provides rapid repair solutions and joint sealing if needed.

## INSTALLATION:

- Perform site and asset assessment
- Excavate trench around critical areas
- Ground preparation depending on conditions:
  - Compact subgrade may be sufficient in stable soils
  - Optional 4-6" crushed stone base for drainage and leveling
  - In some cases, a very lean mix concrete base may be used as an alternative
- Anchor panels if required (no seam overlap)
- Backfill and restore surface

## SUPPORT & CUSTOMIZATION:

- 3B Protection provides full engineering support, site-specific planning, and turnkey installation services. Custom material thickness, cutouts, and advanced sensor integration are available on request.
- For project proposals, installation guides, visual renderings, or to request a quote, please contact **3B Protection's Engineering Support Team**.

## DELIVERY OPTIONS:

- Mats can be delivered on pallets or loaded onto trailers depending on order size and handling preferences.
- For large-area installations, 3B matting can be delivered in liquid form via ready-mix trucks and pumped into place where access allows.
- Delivery method is determined based on site access, scale, and client logistics.

