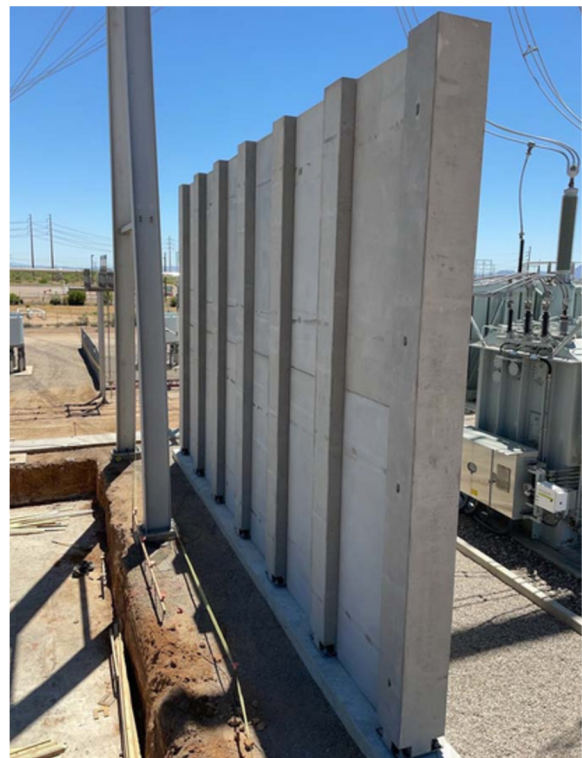




Tel	/	561.277.9751
Email	/	info@3bprotection.com
Web	/	www.3bprotection.com
Inquiries	/	estimating@3bprotection.com
Addr	/	364 Cypress Drive, Suite 102, Tequesta, FL 33469

## 3B BOLT DOWN & REMOVABLE WALLS

3B Protection offers highly versatile Temporary Wall Solutions, featuring both removable and bolt-down walls engineered to deliver superior protection against ballistic threats, blasts, and fires. These walls are designed to meet a range of temporary or short-term security needs while adhering to rigorous safety standards. Removable walls provide exceptional flexibility and ease of transport, making them ideal for temporary setups, dynamic environments, and situations requiring rapid changes. Bolt-down walls deliver superior stability and durability, making them suitable for permanent installations that demand long-term, high-level protection. Both types of walls can be customized to meet specific requirements and are designed to be cost-effective through strategic approaches. Whether for high-security events, dynamic environments, or permanent installations, 3B Protection's solutions provide unmatched flexibility and reliability while ensuring comprehensive security and adaptability, including for critical infrastructure line of sight needs.





## REMOVABLE 3B BALLISTIC, BLAST, AND FIRE-RESISTANT WALLS

### KEY FEATURES:

- **Modular Design:** Easy to assemble/disassemble, flexible for changing security needs
- **Ballistic Protection:** UL level 3–10 rated, protects personnel and assets from firearm threats
- **Blast Resistance:** Withstands high blast pressures, maintains integrity under explosive threats
- **Fire Resistance:** Fire-rated 1–6 hours, compliant with safety standards
- **Versatility:** Customizable shapes and finishes, adaptable to various environments
- **Quick Installation:** Fast, simple setup reduces time and labor
- **Durability:** Resists bullets, blasts, and forced entry for long-term protection
- **Compatibility:** Integrates with 3B products for unified security solutions
- **Ideal For:** Temporary setups, dynamic environments, and critical infrastructure with visibility needs

## BOLT-DOWN 3B BALLISTIC, BLAST, AND FIRE-RESISTANT WALLS

### KEY FEATURES:

- **Enhanced Stability:** Ground-secured for strong resistance to blasts, impacts, and long-term use
- **Ballistic Protection:** UL level 3–10 ballistic protection for reliable, high-level threat defense
- **Blast Resistance:** Built to absorb blast pressures while maintaining structural integrity
- **Fire Resistance:** Fire-rated 1–6 hours, compliant with safety standards for critical environments
- **Permanent Solution:** Fixed install offers stable, long-term protection with minimal upkeep
- **Durability:** Withstands bullets, blasts, forced entry, and harsh conditions over time
- **Low Maintenance:** Minimal upkeep required, reducing costs and simplifying operations
- **Customizable:** Tailored sizing, finishes, and features to meet site-specific security needs
- **Affordable:** Cost-saving through standardization, bulk purchasing, modular design, efficient install, and financing options
- **Ideal For:** Permanent sites, high-stability environments, and critical infrastructure needing line-of-sight control